

Somo 401

LE SOMO BOASTS A PRIME LOCATION ON JEANNE-MANCE STREET, JUST STEPS FROM THE PRESTIGIOUS CAISSE DE DÉPÔT BUILDING IN THE HEART OF THE QUARTIER INTERNATIONAL.



1100 RUE JEANNE-MANCE,
MONTRÉAL, QC H2Z 1L7

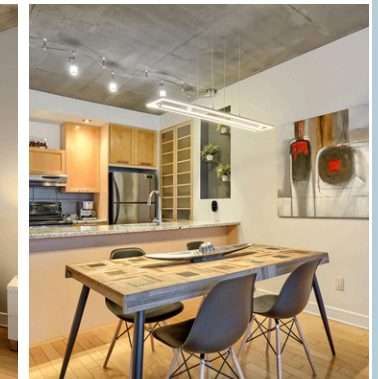
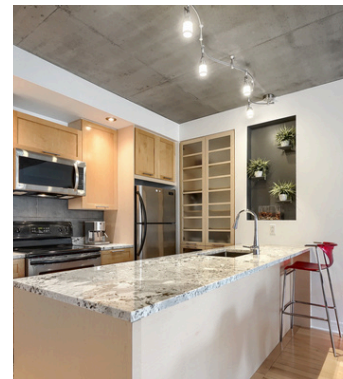
Characteristics:

- 1 closed bedroom
- 1 king-size bed
- 1 full bathroom

Located on the 4th floor
700 square feet
Large windows
Spacious glass shower

Inclusions:

- High-end appliances
- Washer / dryer
- HD television
- Towels
- Office desk
- Complete bedding
- Cooking accessories
- Internet / cable
- Electricity and A/C



Modern kitchen

Stylish one bedroom

Dining area

An efficient, stylish space for cooking, dining, and gathering.

A private haven with a warm atmosphere and inviting décor.

A dining room designed for modern living and unforgettable meals.



1-800-251-0072



info@gesthab.ca



www.gesthab.ca

Somo

Building amenities:

Modern building constructed in 2005
Elevator
Parking



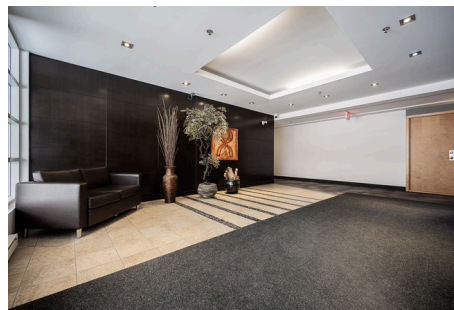
Only steps away from:

- Conveniently located near the **Palais des Congrès de Montréal**
- Close to the **Quartier des Spectacles**
- Steps from **Chinatown**
- Near the **Desjardins** and **Guy-Favreau** business centers
- Surrounded by numerous **restaurants and boutiques**
- Easy access to public transportation via the **Place d'Armes metro station**



Prime location

In the heart of the city, above the ordinary.



Lobby area

First impressions start here –and we make them count.