

Somo 301

LE SOMO BOASTS A PRIME LOCATION ON JEANNE-MANCE STREET, JUST STEPS FROM THE PRESTIGIOUS CAISSE DE DÉPÔT BUILDING IN THE HEART OF THE QUARTIER INTERNATIONAL.

1100 RUE JEANNE-MANCE,
MONTRÉAL, QC H2Z 1L7

Characteristics:

- 1 closed bedroom
- 1 queen-size bed
- Full bathroom
- Sofa bed

- Located on the 3rd floor
- 700 square feet
- Large windows
- Balcony
- Spacious glass shower

Inclusions:

- High-end appliances
- Washer / dryer
- Smart TV (Roku)
- Towels
- Office desk
- Complete bedding
- Cooking accessories
- Internet
- Electricity and A/C



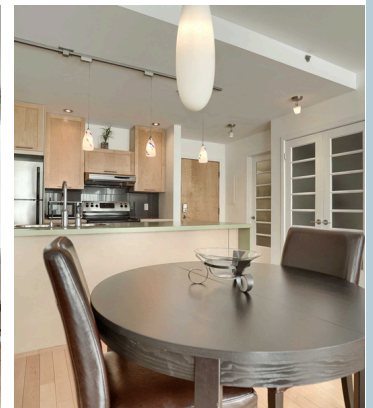
Modern Kitchen

An efficient, stylish space for cooking, dining, and gathering.



Charming One-Bedroom Haven

A private haven with a warm atmosphere and inviting décor.



Premium Dining Area

A dining room designed for modern living and unforgettable meals.

Somo

Building amenities:

Modern building constructed in 2005
Elevator
Parking



Only steps away from:

- Conveniently located near the **Palais des Congrès de Montréal**
- Close to the **Quartier des Spectacles**
- Steps from **Chinatown**
- Near the **Desjardins** and **Guy-Favreau** business centers
- Surrounded by numerous **restaurants and boutiques**
- Easy access to public transportation via the **Place d'Armes metro station**



Prime location

In the heart of the city, above the ordinary.



Lobby area

First impressions start here and we make them count.



1-800-251-0072



info@gesthab.ca



www.gesthab.ca