

Mosaique 8B

IN THE HEART OF DOWNTOWN, INTERNATIONAL DISTRICT
CLOSE TO SQUARE VICTORIA OR PLACE D'ARMES METRO STATION



345 RUE DE LA
GAUCHETIÈRE OUEST
MONTRÉAL, QC H2Z 0A2

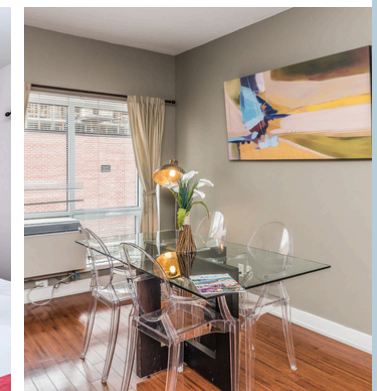
Characteristics:

- 2 Bedrooms
- 2 Bathrooms
- 2 Queen beds
- 4½ (2 closed bedrooms)
- 8th Floor

- 963 square feet
- Large windows
- Spacious glass shower

Inclusions:

- High-end appliances
- Washer & dryer
- Smart TV (Roku)
- Towels
- Complete bedding
- Cooking accessories
- Internet / cable
- Electricity and A/C



High-end kitchen appliances

An efficient, cozy space for cooking, dining, and gathering.

Chic Two-Bedroom Escape

A private haven with a warm atmosphere and inviting décor.

Premium Dining Area

A dining area designed for modern living and unforgettable meals.

Mosaïque

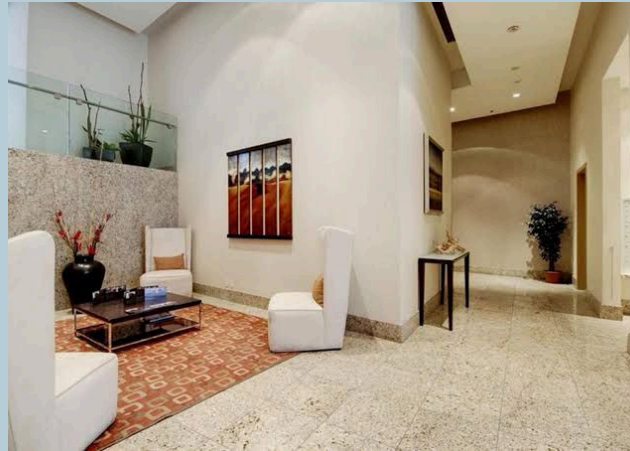
Building amenities:

Gym
Elevator
Terrace
Controlled-Access Lobby
Electric vehicle charger
Security System



Only steps away from:

- World Trade Centre Montréal
- China Town
- Montreal Convention Centre
- Place-d'Armes station



Terrace

The spacious terrace offers a perfect spot for relaxing, entertaining, or enjoying panoramic views.



Gym

A modern gym designed for your lifestyle.



Lobby area

First impressions start here—and we make them count.