

Mosaïque 3A

IN THE HEART OF DOWNTOWN, INTERNATIONAL DISTRICT
CLOSE TO SQUARE VICTORIA OR PLACE D'ARMES METRO STATION



345 RUE DE LA
GAUCHETIÈRE OUEST
MONTRÉAL, QC H2Z 0A2

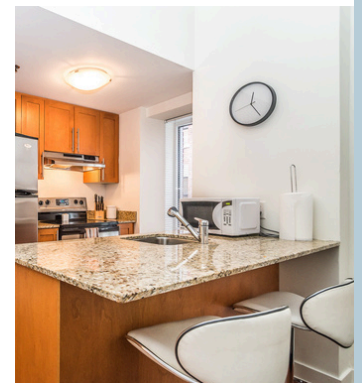
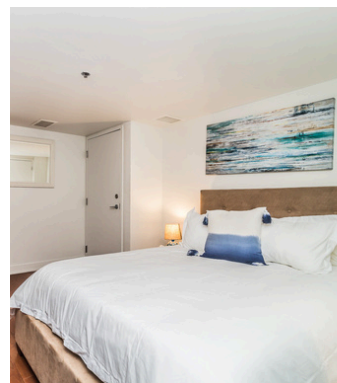
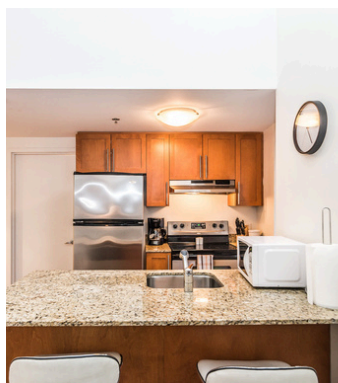
Characteristics:

Mezzanine 1 Bedroom
1 Bathroom
1 Queen bed
3½ (1 closed bedroom)
3th Floor

722 square feet
Large windows
Spacious glass shower

Inclusions:

High-end appliances
Washer & dryer
Smart TV (Roku)
Towels
Complete bedding
Cooking accessories
Internet / cable
Electricity and A/C



High-end kitchen appliances

An efficient, cozy space for cooking, dining, and gathering.

Elegant One-Bedroom Suite

A private haven with a warm atmosphere and inviting décor.

Premium Dining Area

A dining area designed for modern living and unforgettable meals.



Mosaïque

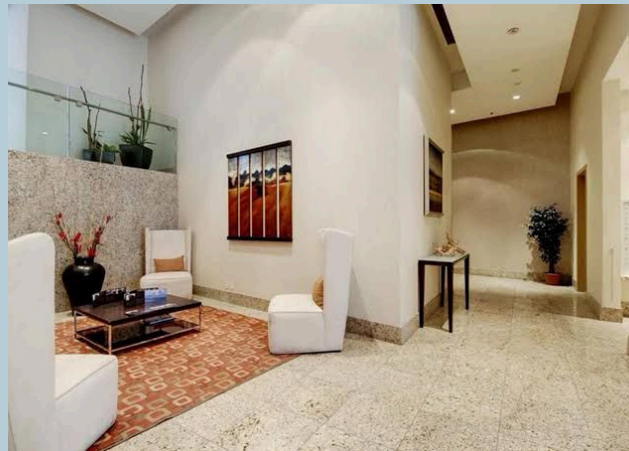
Building amenities:

- Gym
- Elevator
- Terrace
- Controlled-Access Lobby
- Electric vehicle charger
- Security System



Only steps away from:

- World Trade Centre Montréal
- China Town
- Montreal Convention Centre
- Place-d'Armes station



Terrace

The spacious terrace offers a perfect spot for relaxing, entertaining, or enjoying panoramic views.



Gym

A modern gym designed for your lifestyle.



Lobby area

First impressions start here—and we make them count.